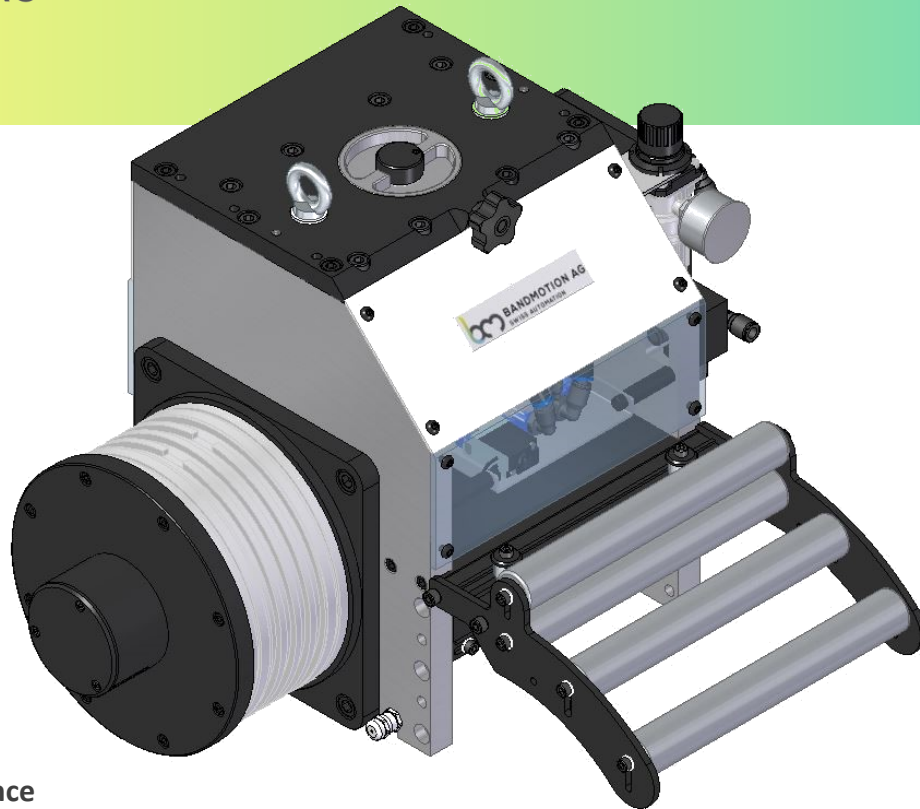




BANDMOTION AG
SWISS AUTOMATION

Roller feeder BML 200-400 T



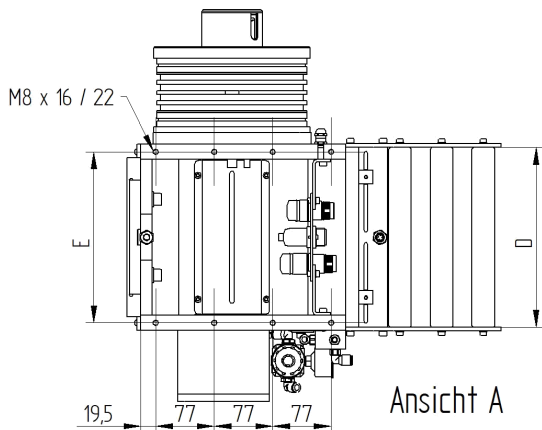
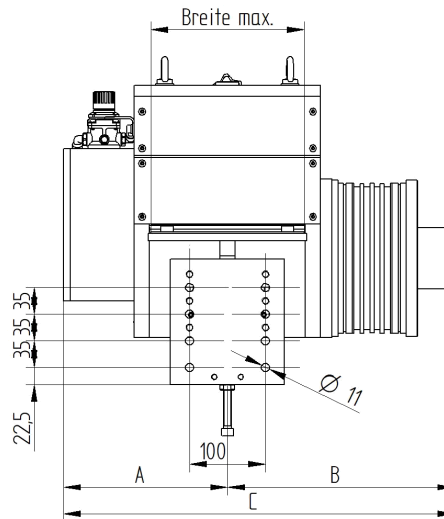
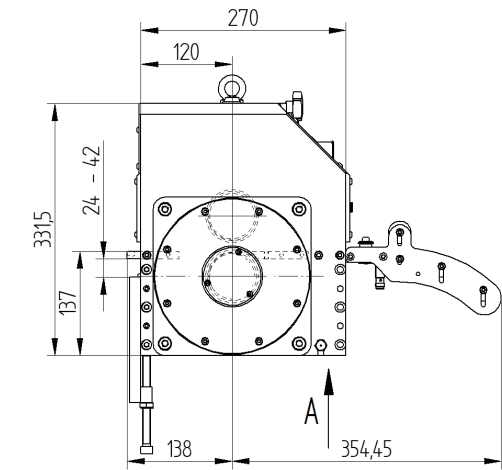
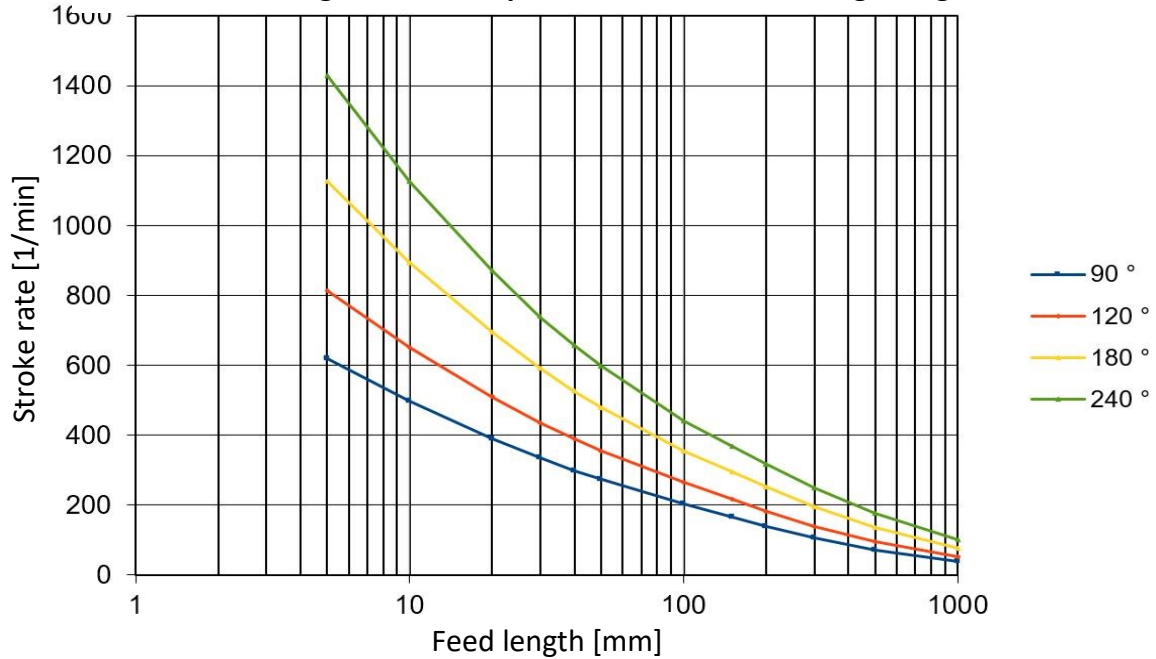
Highlights at one glance

- ⇒ Compact system can be used pushing or pulling
- ⇒ Easy attachment to any downstream machine
- ⇒ Lower and upper roller driven backlash-free, hardened and grinded
- ⇒ Fast pneumatic pilot release
- ⇒ Roller opening at the top and bottom can be adjusted individually
- ⇒ Adjustable roller pressure
- ⇒ Motor brake prevents strip retraction in emergency stop situations
- ⇒ Infeed roller basket with integrated strip end sensor
- ⇒ Highly dynamic CNC drive with torque motor
- ⇒ CNC control as standard as built-in cassette or optionally as table-top housing
- ⇒ Linking the downstream machine to a 24V I/O unit with 18 inputs and 11 outputs
- ⇒ Integrated safety with pulse lock or monitoring unit up to PLe/SIL3
- ⇒ Stroke rate-dependent programming, multiple feeds, threading function
- Options:
 - ⇒ Optional RS232 interface for feed data transmission with ASCII protocol
 - ⇒ Optional various fieldbus connections
 - ⇒ Optional service software for device analysis, PLC programming and data backup
 - ⇒ Optional synchronous mode with slave machine
 - ⇒ Further options such as measuring wheel, mark reader, cam gear etc.
 - ⇒ Special designs according to your specifications are possible at any time on request

Technical data

Strip width	max. 200-400mm
Roller \varnothing	70mm
Roller opening	max. 9mm
Precision	+/- 0.02mm
Continuous tensile force	950 N
Speed max.	170 m/min
Power supply	3x400V / 50Hz

Stroke rate diagram without pilot release with belt weight 6kg



Typ	Breite max.	A	B	C	D	E
BML 200	200	216	299,5	515,5	237	225
BML 300	300	266	349,5	615,5	337	325
BML 400	400	316	399,5	715,5	437	425